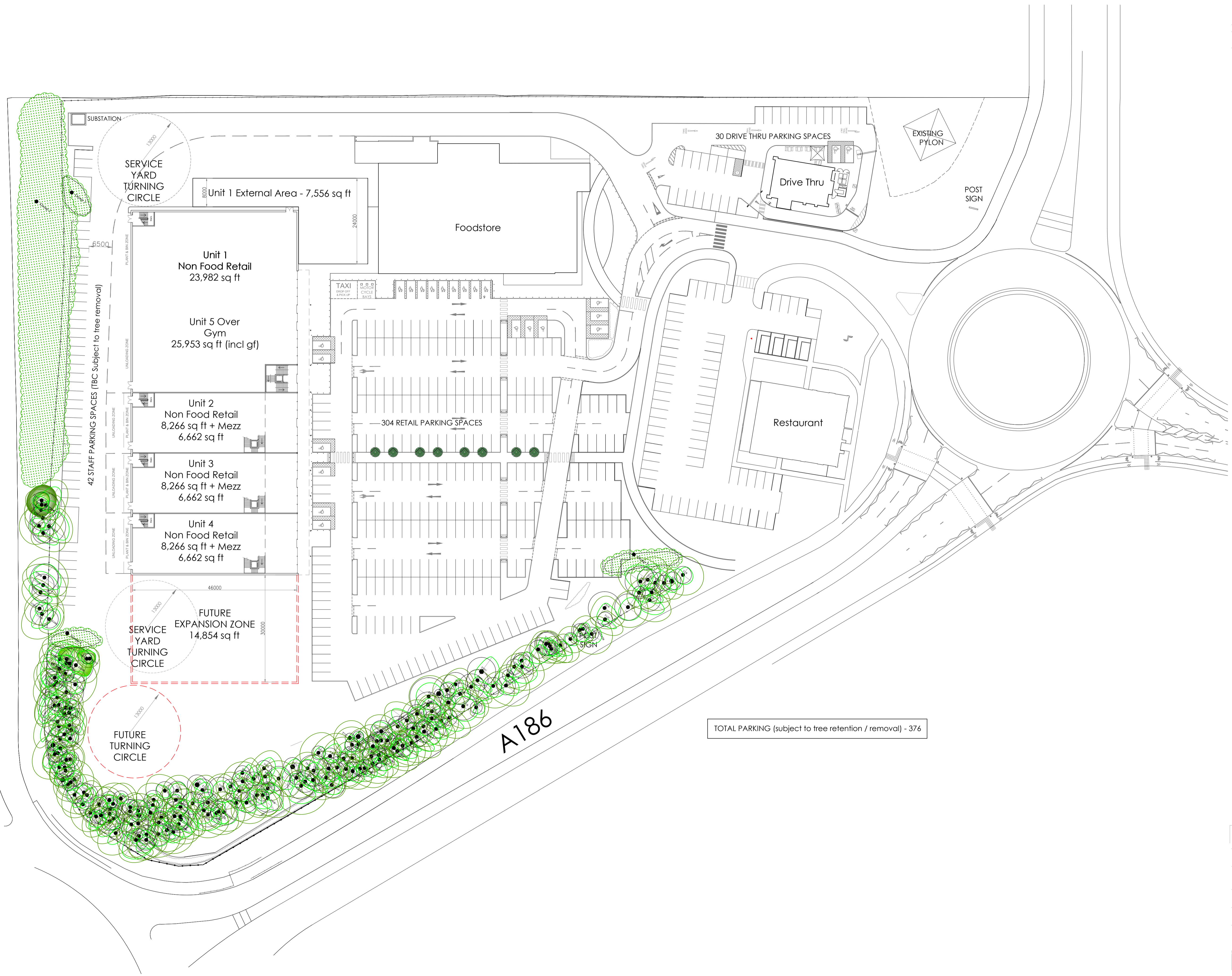


Rev	Date	Description	Rev By	CHK'd By

A19



SERVICE YARD TURNING CIRCLE

Unit 1 External Area - 7,556 sq ft

Unit 1 Non Food Retail  
23,982 sq ft

Unit 5 Over Gym  
25,953 sq ft (incl gf)

Unit 2 Non Food Retail  
8,266 sq ft + Mezz  
6,662 sq ft

Unit 3 Non Food Retail  
8,266 sq ft + Mezz  
6,662 sq ft

Unit 4 Non Food Retail  
8,266 sq ft + Mezz  
6,662 sq ft

FUTURE SERVICE YARD EXPANSION ZONE  
14,854 sq ft

FUTURE TURNING CIRCLE

Foodstore

Drive Thru

Restaurant

304 RETAIL PARKING SPACES

TOTAL PARKING (subject to tree retention / removal) - 376

A186

42 STAFF PARKING SPACES (IBC Subject to tree removal)

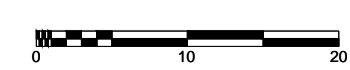
SUBSTATION

EXISTING PYLON

POST SIGN

POST SIGN

30 DRIVE THRU PARKING SPACES



Client		The Northumberland Estates	
Project Title		Northumberland Park Phase 2	
Project Address		Northumberland Park, Shiremoor	
Drawing Title		Proposed Site Plan	
Drawing Number		2150 SK49	
Drawn	Checked	Date	Scale
MW	MJ	14.05.18	1:500
Site	Status	A1 Sketch	

Media Exchange 2  
Coquet Street  
Newcastle Upon Tyne  
NE1 2QB

Forsyth House  
93 George Street  
Edinburgh  
EH2 3ES

t : 0191 260 5551  
e : admin@projektorchitects.com  
w : www.projektorchitects.com

